

TEMPERATURE RECORDERS WITH PRINTER

T-PRINT G0221E - dual channel temperature recorder

T-PRINT G0241 - dual channel temperature recorder

with two-state inputs and RS232 output

USE:

- printout of temperature record during transport of food, pharmaceuticals, flowers, live animals and other goods
- designed especially for installation in driver's cabin

FEATURES:

- record from one or two temperature probes
- Delivery Ticket, Journey Ticket and Multi Day printouts
- graphical and numerical printout of temperature
- easy history printouts
- fast print to usual 57mm thermo paper in 10m rolls
- 3400 record lines/one paper roll, 5 years printout archivability
- large graphic illuminated display
- indication of temperature exceeding by LED and acoustically
- record of actual or average values at logging interval
- cyclic record - after filling the memory oldest records are overwritten by new
- no need to download data - large 1MB memory stores up to 5 years of record permanently in memory
- USB interface for record download to the PC, free PC software
- calculated MKT - mean kinetic temperature of pharmaceuticals in the PC program
- optional RS232 link for GSM modem connection
- fifteen selectable languages - e.g. English, German, French, Italian, Polish, Dutch, Spanish, Portuguese, Romanian, Czech
- degrees of Celsius and Fahrenheit
- included traceable calibration certificate
- TÜV SÜD certified to conform EN 12830, Class 1 and EN 13486, Class 1 for the transport of food



Sxxx Pxxxx Gxxx

TECHNICAL PARAMETERS

Measuring temperature range:	-90 to +260 °C
Operating temperature range:	-30 to +65 °C
Operating temperature range of the printer:	-20 to +50 °C
Compatible temperature probes:	with Pt1000 sensor with maximum cable length 10 meters
Accuracy of the input without probe:	±0.2 °C
Resolution:	0.1 °C
Logging interval:	user selectable from 1 minute to 60 minutes
Memory capacity:	1MB - 172 032 records from one probe, 102 400 records from two probes (up to 5 years with 15 minutes interval and one probe)
Power:	9 to 32Vdc, protected against alternator load shedding+internal Lithium battery
Consumption while printing:	approximately 8 W
Consumption - not printing:	approximately 0.1 W
Dimensions without holders, connectors:	175 x 124 x 51 mm (w x h x d)
Weight:	approximately 430 grams
Protection:	IP20



Included accessories:

Traceable calibration certificate from the manufacturer with declared metrological traceability of ethalons is based on requirements of EN ISO/IEC 17025 standard. Included are also metal wall holders for recorder mounting, roll of paper with 5 years print-out archivability, USB cable for communication with the PC, battery for internal clock.

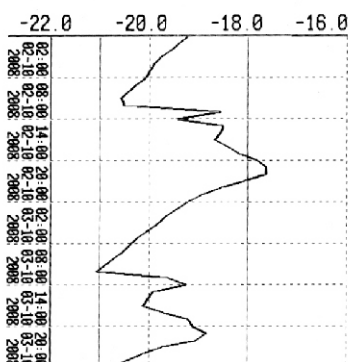
Anytime it is possible to download free basic program for Windows. Program enables to control all recorder functions and viewing and printing of record in numerical and simple graphic format. It is necessary to order temperature probes - see further.



YOUR COMPANY			
T-PRINT G0221	FW:00.13		
Ser.Num.:	07970003		
Location:	VEHICLE BN CC230		
Printed:	04.03.2008 6:41		
Ch1:FROZEN SECTION			
Lower AlarmLimit	-25.0		
Upper AlarmLimit	-22.0		
Ch2:CHILLED SECTION			
Lower AlarmLimit	1.0		
Upper AlarmLimit	8.0		

03.03.2008	Ch1	Ch2
15:00:00	-19.7	6.8 °C
15:05:00	-21.1	4.8 °C
15:10:00	-21.7	4.0 °C
15:15:00	-22.0	3.6 °C
15:20:00	-22.3	3.0 °C

> YOUR COMPANY <	
T-PRINT G0221	FW:01.20
Ser.Num.:	00970012
Location:	VEHICLE BN CC230
Printed:	06.10.2008 10:57
Ch1:Frozen section	[°C]
Lower AlarmLimit	-21.0 (—)
Upper AlarmLimit	-18.0 (—)



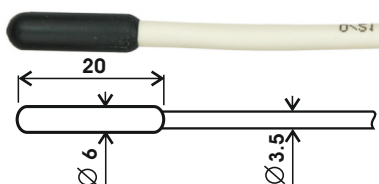
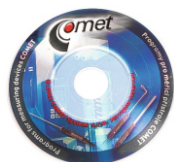
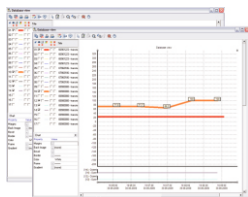
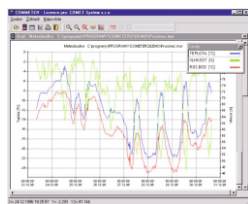
TEMPERATURE RECORDERS WITH PRINTER

T-PRINT G0221E - dual channel temperature recorder

T-PRINT G0241 - dual channel temperature recorder

with two-state inputs and RS232 output

Optional accessories:



SWR004

Optional software for Windows - color printing, vertical and horizontal zooming of graphs and other functions. Calculation of MKT - mean kinetic temperature of pharmaceuticals in the program - see also page 23.

DBL

DBL Logger Program - database program for work with data from Comet loggers. Program enables i.a.:

- To set locally the GSM modem via RS232 link by means of the QMS2901 cable.
- To view selected channels from any Comet logger together with selected channels of other Comet loggers.
- Measurement from different Comet devices is possible to combine in one table or graph.
- To choose any time interval for analysis.
- Print, export to PDF - table and graph.

Other freeware needed for system operation:

- database server MySQL or Microsoft SQL
- see also page 23

SW100

CD with free PC program.

Probes
Pt1000

Temperature probes with Pt1000 sensors equipped with no connector - there is a symbol /O behind probe name. Recommended is watertight probe Pt1000TR160/O on the cable. Specify required cable length 1, 2, 5, 10, 15 or 20 meters.

Available probes: Pt1000TR160/O-2m, Pt1000TR160/O-5m, Pt1000TR160/O-10m, Pt1000TR160/O-15m, Pt1000TR160/O-20m.

SA200A

Magnetic door contact, connectable to recorder's binary inputs, without cable.

SA200A-2
SA200A-5
SA200A-10
SA200A-20
SA200A-30

Magnetic door contact, connectable to recorder's binary inputs with cable lengths 2, 5, 10, 20, 30 meters.

PR033

Spare roll of thermo paper - width 57mm, length 10m, 5 years archivability.

A1940

Ac/dc adapter 230V-50Hz/24Vdc/24W for power outside of the vehicle.